

Your Cornwall guide to

WINTER *Wellbeing*♥



**Reducing fuel poverty, improving
health and progress to work**

☎ 0800 954 1956 | ✉ advice@cep.org.uk

Ask for help with your finances

Please seek help before your debts get out of control.

The sooner you ask for help the better, and could avoid you getting into serious debt. This can also help some of the mental stresses and strains of being worried about money.

Do a check on what you could be entitled to.

Make sure you are getting all of the benefits that you are entitled to. The **Gov.uk** website has a benefits checker tool that you can use. You can also try the Better Off Calculator online at:

www.betteroffcalculator.co.uk

Call Citizens Advice Cornwall on **0800 144 8848**
or text the word **advice** to **78866**

There is a full list of the types of support you could be eligible for on our website, along with a local interactive money support tool. Visit **cornwall.gov.uk/moneyworries** or call **0300 1234 100**

Cost Of Living

Visit **www.cornwall.gov.uk/costofliving** to check that you are receiving everything you are entitled to.

- Help with housing costs
- Household Support Fund
- What to do if you need help with food
- Worried about housing
- Help to pay Council Tax (or call **0300 1234 171**)

WELCOME!



Welcome to the Winter Wellbeing Guide 2025-2026, helping you stay warm, well, safe, happy and informed.

This booklet is packed with useful advice on the various services and support available in Cornwall this winter.

In the **Warm** section you can expect tips to help you stay warm with information on organisations that can help with grants, factsheets, advice and more, such as community hubs and looking out for friends and neighbours.

In the **Well** section there's advice to help prevent the cold weather causing health problems and stay well this winter. Here you can expect to read about vaccinations, flu, Covid-19 and the best ways to look after yourself.

The **Safe** section is about protecting yourself so you can stay safe in any bad weather. There's also information about carbon monoxide, condensation and mould, and much more.

Happy looks at contacts and advice if you need to talk to someone and connect with others. This year it includes new information about the great WorkWell programme, supporting people who are struggling to go to work or stay in work due to their physical or mental health.

Finally in **Informed**, you'll find a list of the agencies and contacts that can provide help and support.

Here's wishing you a **warm and healthy winter**.

Dr Eunan O'Neill

Director of Public Health
Cornwall Council

Emma Rowse

Chief Executive Cornwall
Voluntary Sector Forum

Dr Chris Reid

Chief Medical Officer, NHS
Cornwall and Isles of Scilly

Local help to enjoy a warmer, healthier home

We are Community Energy Plus. As **Cornwall's energy advice charity**, we provide **energy advice** and **practical help** for householders in Cornwall to achieve warmer, healthier homes.

We help people living across all housing tenures.

The support we provide includes:



Energy

- Understanding your energy bills, managing energy debt and speaking to your supplier.
- Tips on keeping warm on a tight budget.
- Emergency help to keep warm.
- Access to grants for heating repairs and upgrades, insulation and other energy efficient measures.
- Advice on reducing damp and mould.



Money

- Advice on saving energy and money.
- Signposting to support available to help maximise your income.
- Information about discounted tariffs available from South West Water.
- Referrals to local and national organisations for help dealing with debt and money management issues.



Health & Wellbeing

- Links to services provided by local and national organisations.
- Referrals for free home fire safety checks, smoke and carbon monoxide alarms.



WHAT'S INSIDE



WARM

Simple things to keep you warm and make the most of your home.



WELL

Advice and help to prevent the cold weather causing serious health problems.



SAFE

Protecting yourself and staying safe in snow, ice and bad weather.



HAPPY

Contacts and advice if you need to talk to someone or want somewhere to go.



INFORMED

A list of agencies and contacts who can provide help and support.

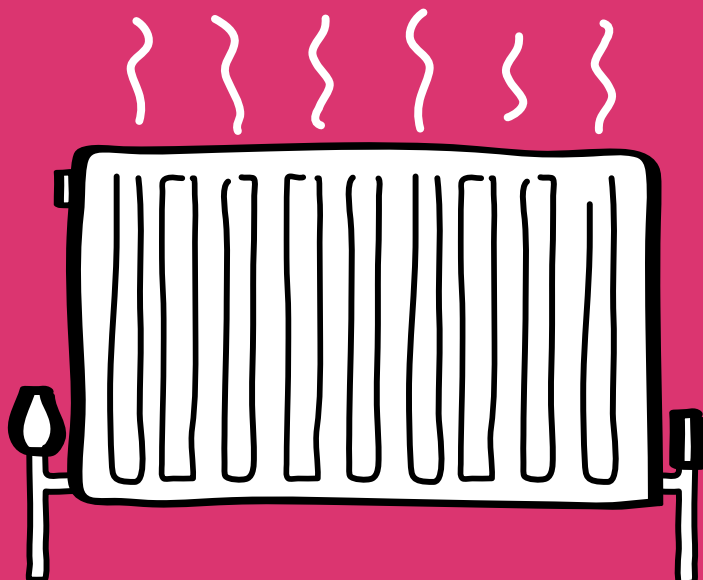


WARM

One of the best ways of keeping yourself well during winter is to stay warm.

Here are some simple things you can do to keep warm and make the best use of heating your home this winter.

Call 0800 954 1956 or email advice@cep.org.uk





Winter Wellbeing advice, information and grants

Advice for a warmer, healthier home

Advice is available to help you save money and keep warm and well this winter. Contact **Community Energy Plus**, **Citizens Advice Cornwall** or **National Energy Action** and **National Energy Foundation** can also help.

Saving energy and money

For the Saving Energy and Money guide and the Support with Rising Living Costs guide, please download them from www.cep.org.uk/resources/factsheets-and-leaflets or email advice@cep.org.uk or call **0800 954 1956** for a printed copy.

Insulate your home “Fabric first” approach

It is vital to stay warm and make best use of energy, so make sure your home is well insulated and seek help and advice with your heating costs.

We can help eligible households to improve warmth within their home by The Energy Company Obligation (ECO), LA (Local Authority) FLEX, Great British Insulation Scheme (GBIS) or the Warm Home Discount Industry Initiative, (funded by OVO, to include minor repairs & to fix broken boilers). Please go to **Grants, loans and subsidies for energy use - Cornwall Council** webpage for new updates. For more information on double glazing, please visit www.lendology.org.uk/partner/view/cornwall-council

OVO and Boost customers can self-refer or be referred for additional support with energy debts, keeping warm packs and more energy efficient white goods, at: **Customer Support Package (ovoenergy.com)**

Green Home Improvement Loan Scheme

Cornwall Council has teamed up with **Lendology CIC** to offer the Green Home Improvement Loan Scheme to help homeowners and private landlords fund energy efficiency improvements. To apply and for more information, visit **www.lendology.org.uk/apply-now** or email **loans@lendology.org.uk** or call **01823 461099**

If you are looking for free impartial energy saving advice to help boost the energy rating of your home and to help you to save money on energy bills, you can use our Homewise tool to learn about the energy efficiency measures and renewable technologies that would suit your home and lifestyle. Please visit **cornwallcouncil.homewise.energy/App/Welcome**

Keep your home warm

We can help some households with costs of keeping the heating on and paying for warmth. More information is at **Household Support Fund - Cornwall Council**

Wrap up warm

Remember to wear hats, gloves and scarves. If possible, stay inside during a cold period. Wear several thin layers of clothes in order to keep the warm air trapped between them. If you get wet, change into dry clothing as soon as you get indoors.

Keep active

Move around hourly and don't sit down for long periods of time. Even light activity will help keep you warm.



Community Hubs

Community Hubs are places that provide support and resources for their communities. Hubs rely on organisations working together to identify the best support available for people at a local level. A Community Hub can be a building or space, or a network of people who offer safe places for community members. Here you can find help, advice, support, and join in activities. In towns and villages, there are various types of hubs that each play a unique and vital role in their community.

Community Hubs offer a chance to get help and support with your mental and physical health and wellbeing. This includes tackling loneliness and isolation by offering activities you can get involved in with others.

This winter you can find a range of activities taking place in your Community Hub, including:

- * Arts, craft, cooking and IT sessions
- * Someone to talk to and connect you to the right organisation who can help
- * Support with managing your money, benefit entitlements and medical conditions
- * A warm place to go, with the offer of hot food and drink in many locations

Contact the Community Gateway for more information about your local Community Hub. **Community Hubs - Volunteer Cornwall** and **Community Hub Network | Cornwall Voluntary Sector Forum** (cornwallvsf.org)



Pension Credit

Help spread the word to anyone you know over State Pension age that they could be missing out on extra money. Spending 5 minutes using the government's online 'can I claim Pension Credit?' checker tool and find out if they're entitled to extra support <https://www.gov.uk/pension-credit/eligibility> or call **Pension Service helpline** on **0800 991234**

You might be allowed to claim even if you :

- * have savings
- * are getting a small occupational pension
- * own your own home
- * have been turned down in the past.
- * are working

Pension Credit is a tax-free means-tested benefit to give you extra money to help with your living costs if you're over State Pension age and on a low income. Pension Credit tops up your weekly income to £227.10 for an individual, or £346.60 if you have a partner. You may get extra amounts if you have other responsibilities and costs. The top up and extra amounts are known as 'Guarantee Credit'.

Four ways Pension Credit helps pensioners save housing costs:

- 1.** Pension Credit can help with certain housing costs. Eligible pensioners might also qualify for a Council Tax Reduction to lower their council tax bill. Housing Benefit if they're renting, or Support for Mortgage Interest if they own their home.
- 2.** Energy bills: Pension Credit unlocks access to additional energy support. Eligible pensioners could receive the Warm Home Discount to reduce electricity costs and Cold Weather Payments during particularly cold spells.
- 3.** Health and Wellbeing: Pension Credit can provide access to essential NHS services. This includes dental treatment and help with transport costs for hospital appointments.
- 4.** TV Licence: Pensioners aged 75 and over who are eligible for Pension Credit qualify for a free TV Licence.

<https://www.gov.uk/pension-credit>



“Just wanted to say thank you for the central heating system. It’s going to make such a difference this winter”

Look out for older friends and neighbours

Check they’re safe and well through the winter. Make sure they’re warm enough, especially at night, and have stocks of food and medicines so they don’t need to go out during very cold weather. If you are worried about a relative or an older neighbour, contact **Cornwall Council** or **Age UK Cornwall**.

Help with heating costs

One in seven households in Cornwall are in fuel poverty.

Cold Weather Payments may be available to you if you receive certain benefits, or have a child who is disabled or under the age of five. Payments are made when temperatures are below 0°C for seven consecutive days. A payment of £25 is made for each seven day period. To find out more, contact **Jobcentre Plus** or **Citizens Advice Cornwall** or visit www.gov.uk/cold-weather-payment.

Council Tax Support if you live on your own, you can claim a 25% discount off your council tax bill. If a member of your household is ‘substantially and permanently’ disabled, you could reduce your council tax bill by being put in a lower council tax band. Council Tax Support helps people who have no income or a low income, or are claiming certain benefits, to pay some or all of their council tax. You can claim Council Tax Support if you own your own home or rent. You can also claim if you are working or unemployed. Entitlement to Council Tax Support is based on how much income, capital and savings your household has. Contact Cornwall Council to check if you’re eligible for Council Tax Support and make an application.



The Warm Home Discount Scheme can provide you with **a discount of £150** on your electricity bill. The scheme has recently changed so you no longer need to apply to your energy supplier, even if you did this in previous years. The Government and DWP decide who is eligible based on qualifying benefits. **If you qualify**, and your energy supplier participates in the scheme **you will receive the one-off discount by 31 March 2026.**

LiveWest customers can use its in-house Tenancy Sustainment Team for support with income maximisation, energy advice, accessing grants and hardship support. More information is available on their website.

Priority Services Register

All energy and water companies run Priority Services Registers to help vulnerable customers with their energy supply. It's free to join and offers extra help with energy accounts, support during power cuts and advance notices if their electricity needs to be turned off. Contact your energy supplier, water supplier or **Community Energy Plus** to find out how you can join the Priority Services Register.

Wales & West can help customers with a gas cooking appliance to fit a Locking Cooker Valve. It's a simple safety device fitted (subject to survey) to existing gas cooker pipework free of charge. This helps people remain safe in their own homes, and gives peace of mind to family or carers. Contact **Wales & West** to find out if you could be eligible.

Smart meters and energy monitors can save you money. Contact your energy supplier who can install one for free.



TOP TIPS

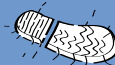
for staying warm
and well this winter

Call us on **0800 954 1956**

❄️ **WINTER** ❄️
Wellbeing♥️



- 1** Keep warm and try to keep your heating at 18°C (living areas) and at 16°C (bedrooms)
- 2** Have regular hot meals and drinks
- 3** Call us for financial help and advice on grants to stay warmer for less
- 4** Insulate and draught proof your home, call us to see how we can help
- 5** Join the Priority Services Register – contact your energy provider or Citizens Advice Cornwall
- 6** Check and service your heating systems yearly
- 7** Keep moving regularly to help keep warm
- 8** Top up your protection. Ask your GP or pharmacist about winter vaccinations including flu and Covid.
- 9** Move towards work, volunteering and training 📞 01872 326440
- 10** Look after yourself and check on neighbours
- 11** To get a free home fire safety check 📞 0800 358 1999
- 12** Travel safely, consider weather conditions before you travel
- 13** Boiler Flow settings – you can cut your gas costs by 6-8% by lowering the temperature flow setting on your combi or condensing boiler. Call 0800 954 1956 for advice





WELL

We all feel the cold in winter, but for some people cold weather and damp cause really serious health problems, especially if you are:

- **over 60**
- **on a low income**
- **living with a long-term health condition**
- **disabled**
- **caring for someone**



Staying Well



Health problems can get worse during winter, making us more vulnerable to winter illnesses. People with **long-term conditions**, such as kidney or heart disease, COPD (including emphysema and chronic bronchitis), asthma or diabetes are at higher risk.

Know Your Numbers

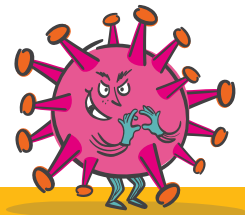
Your blood pressure can also rise during the cold weather, leading to increased risk of strokes or heart attacks. Know Your Numbers by visiting a pharmacist for a blood pressure check, borrowing a free blood pressure monitor from a library or visiting the Know Your Numbers webpage to find out more information. **<https://cios.icb.nhs.uk/help-us/know-your-numbers/>**

Stay Well this winter

- ★ Get vaccinated. Help yourself and loved ones stay safe, reduce the risk of serious illness, passing illness to others or even avoid a hospital stay by topping up your protection with vaccines such as flu or Covid.
- ★ Care home residents will be offered vaccinations to help them stay well.

School and work

- ★ You can help reduce the spread of viruses by working from home if you think you may have a cold or cough. Talk to your employer to ask if this is possible.
- ★ Children and young people with mild symptoms, such as a sore throat, slight cough or runny nose, **who are otherwise well** can still attend education.



Who should get their **winter vaccinations**, and why?

With winter come seasonal illnesses. The good news is you can protect yourself and your loved ones. The NHS is offering free winter vaccinations to those eligible – including flu jabs, COVID-19 boosters, and even the RSV vaccine for some patients.

By getting vaccinated, you greatly reduce your risk of getting seriously ill, and you'll be less likely to pass viruses on to other vulnerable people.

ELIGIBLE FOR FLU

- + People in a clinical risk group
- + Pregnant women
- + Health and social care workers and unpaid carers
- + Household contacts of people with immunosuppression
- + 2&3 year old and school aged children

ELIGIBLE FOR COVID-19

- + Aged 75 and over
- + Immunosuppressed

ELIGIBLE FOR RSV

- + Aged 75 to 79
- + Turned 80 years old after 1 September 2024
- + Pregnant women

Book with your GP, via the NHS website
or visit your local pharmacy.

Children and young people who are unwell and have a high temperature should stay at home and avoid contact with other people, where they can. They can go back to school, college or childcare, and resume normal activities when they no longer have a high temperature and they are well enough to attend.

.....

1



Get vaccinated

Vaccines are our best protection so it's important you get all the vaccines you are eligible for.

2



Practice good hygiene

- * Wash your hands.
- * Cover your mouth and nose if you cough or sneeze.
- * Clean your surroundings frequently.

3



Wear a face covering/mask

If you have a cough or cold you can still stop the spread of viruses by wearing a mask.



**Healthier
Together**



Let's get Healthier Together

Health and wellbeing partners are working together across Cornwall and the Isles of Scilly on a health and wellbeing campaign called 'Healthier Together'.

There are 5 actions in the campaign:

1. **Get checked:** taking up health checks and cancer screenings offered by the NHS
2. **Eat well:** eating a balanced diet with plenty of fruit and veg can reduce your chance of dementia, heart disease and many cancers
3. **Move more:** even just for 10 minutes a day (and there is lots of support offered by Active Cornwall and Healthy Cornwall)
4. **Try new things:** learning a new skill can boost your self-confidence and help you to meet other people
5. **Be kind:** have you noticed how good it feels to help someone else? (and there are lots of other ways to help look after your mental health)



NHS vaccinations and when to have them

Vaccines are the most effective way to prevent many infectious diseases. It's important that vaccines are given on time for the best protection. If you or your child have missed a vaccine, please contact your GP surgery to find out how to catch up on them.

Vaccine guide

There are different vaccinations offered to pregnant women, babies, children and adults.

Childhood vaccines

- * MMR (Measles, Mumps, Rubella): provides long-term protection against highly contagious viral infections.
- * Rotavirus: protects infants from severe diarrhoea and vomiting.
- * DTP (Diphtheria, Tetanus, Pertussis): prevents 3 serious bacterial infections.

These vaccinations are first offered when children are under a year old, with a 4 in 1 booster (diphtheria, tetanus, whooping cough and polio) before they start school.

Young adult vaccines

- * HPV (human papillomavirus): protects against cervical cancer and other HPV-related cancers.
- * Meningitis ACWY: protects against bacterial meningitis, particularly important for university-bound students.
- * Tetanus, diphtheria and polio booster: top-up protection given to teenagers in Year 9.

Visit the
NHS website
www.nhs.uk to find
a pharmacy offering
NHS Flu Vaccinations
near you.

You can visit **<http://www.nhs.uk/wintervaccinations>**
for more information



Started college or university?

Make sure you've already had:

- ✱ the MenACWY vaccine. This protects against serious infections such as meningitis. You can still ask your GP for this vaccine until your 25th birthday.
- ✱ 2 doses of the MMR vaccine. There are outbreaks of mumps and measles at universities.
- ✱ the HPV vaccine. This helps protect against genital warts and cancers caused by the human papillomavirus (HPV), such as cervical cancer.

For those who are pregnant

- ✱ Flu: these viruses can be dangerous for mum and baby.
- ✱ Whooping cough: protects baby from developing whooping cough.
- ✱ RSV (respiratory syncytial virus): protects baby from RSV.

For those aged 65+

- ✱ Shingles and pneumococcal vaccinations: offered to people aged 65 and over, providing protection against serious illnesses like pneumonia, meningitis and shingles.
- ✱ Respiratory syncytial virus (RSV): offered to adults aged 75 to 79.

Annual vaccines

- ✱ Flu: provides protection against flu, and offered in the winter for over 75s, children aged 2 to 3, school aged children and those in high risk groups including pregnant women, as well as health and care workers.
- ✱ COVID-19: seasonal vaccination tops-up protection against COVID-19. Over 75s and those in high-risk groups.



Flu vaccines for children

Parents of **eligible pre-schoolers** are encouraged to book their child in with their GP practice for the nasal spray that protects against flu. Parents of school-aged children are asked to sign any consent form that is sent home from school.

Children aged 6 months to 2 years with a long-term health condition that increases flu risk are eligible for the flu vaccine injection. This includes those ever admitted overnight for a lung infection, and those with conditions like diabetes.

Pneumonia

www.nhs.uk/conditions/vaccinations/pneumococcal-vaccination

Shingles

You are eligible for the shingles vaccine when you turn 65. You'll be offered 2 doses of the vaccine. These are given between 6 and 12 months apart. Your GP should contact you to make an appointment to have your shingles vaccine. Contact your GP surgery if you think you're eligible for the shingles vaccine and you've not been contacted about it. You'll remain eligible until your 80th birthday. **Shingles vaccine - NHS** (www.nhs.uk)

Norovirus

Norovirus is a common stomach bug, particularly in winter. It is very easy to spread and causes sickness, an upset stomach, a temperature and aches and pains. Most people recover quickly. People with other health conditions and very young children are at more risk of being dehydrated.

Please do not visit hospitals, your GP or a care home if you have symptoms. You should stay at home and drink plenty of water until two days after you recover. Make sure you wash your hands with soap and water. Antibacterial hand gels do not stop norovirus.

Get advice from NHS 111 online or contact your GP surgery if your symptoms do not improve in 72 hours.

Think Pharmacy First!

Most pharmacies can help with 7 common conditions without needing a GP appointment. Why not ask about...

NHS

Cornwall and
Isles of Scilly



Earache

for young people age 1 to 17



Sinusitis

for age 12 and over



Sore throat

for age 5 and over



Infected insect bite

for age 1 and over



Impetigo - skin infection

for age 1 and over



Shingles

for age 18 and over



Uncomplicated urinary tract infections

for women age 16 to 64

Home care is best

Many common winter ailments such as coughs, colds, diarrhoea and sickness will get better in time and can be treated effectively with over the counter or pharmacy medicines. Pharmacists are easily accessible, highly trained professionals who are qualified to offer advice on how to ease symptoms and prevent conditions getting worse. You don't need an appointment and many pharmacies are open late and at weekends.

If you're housebound in winter

There may be healthcare services available to you at home such as dental checks and eye tests. Please call **NHS on 111** to find out more. Some services provide additional support for people newly discharged from hospital, those at risk from falls, or worried about a friend or relative with early signs of dementia. Contact the **Age UK Cornwall Helpline** to see what help is available to you.

British Red Cross mobility aids

The British Red Cross provides a voluntarily run, mobility aids loan service that aims to help people who require wheelchairs, toilet frames and commodes on a short-term loan basis, typically for a six to eight-week period for a donation. They also have a range of Independent Living Products that are available to purchase from their local facilities. You can visit their base in Tolvaddon, Pool or they can arrange for a local home delivery (for an extra fee).

Keeping active

Activity can be really helpful for keeping well in winter. The more you keep moving the better your circulation and heart health can be.

AskSARA provides a quick and easy to use advice service, which can assist anyone who finds that they have difficulties with everyday tasks. You choose a topic relating to your health, your home or daily living activities, and are asked some questions. You are then given a personalised report with advice and suggestions of small items of equipment that could help.

Look after yourself

Healthy Cornwall supports people living in Cornwall and the Isles of Scilly to make healthy choices. The service supports people with weight management, healthy eating, physical activity, stopping smoking, healthy pregnancy and mental wellbeing.



Our health is our most important asset and learning how to take care of ourselves can help us to prevent illness and live longer. For more information, please visit www.healthycornwall.org.uk or call **01872 324200**

If you have a long-term health condition, the first step to looking after yourself is to understand your own health needs and decide what is right for you. This is where a personalised support plan can help. There is more information available on **NHS Integrated Care Board (ICB)**

website (cios.icb.nhs.uk/health/long-term-condition), or speak to your GP surgery.

NHS Health Check

Are you aged 40 to 74 without a pre-existing condition? Find out about the FREE NHS Health Check. Even though you might be feeling great, if you're over 40 you may be at risk of heart disease, stroke, kidney disease, diabetes or dementia. A FREE NHS Health Check can help you reduce these risks and make sure that you stay healthy. To find out more visit www.nhs.uk/conditions/nhs-health-check, or speak to your GP.



Learning Disability Health Checks

People with learning or intellectual disabilities are known to have significantly poorer health than other people. This is because they find it more difficult to talk about symptoms and are less likely to make appointments to talk about their health and health professionals don't always know how to meet their needs. For advice and information, contact the **Learning Disability Liaison Team**.

Health Visiting and School Nurse Advice Line

The **Health Visitor and School Nurse Advice Line** provides health advice, guidance and support for families with children and young people aged 0-19 years.

Call **01872 322779** (Monday to Friday, 9am-5pm). Leave a message or email hvsnadvice@cornwall.gov.uk

Together for Families

Facebook page and Parenting Podcasts

Keep up to date with children's services run by Cornwall Council including health, education and social care @TFFCornwall. Explore the brilliant array of Parenting Podcasts by **Together for Families**, and the **Family Information Service** with lots of useful advice and local activities, as well as great national programmes such as the BBC's **Tiny Happy People** and lots more!

Stop Smoking

Stopping smoking is one of the best things you can do for your health. The physical health benefits of quitting are well known, but not everyone realises it can also boost your mental health and wellbeing. Stopping smoking can improve your mood and help relieve stress, anxiety and depression. There are lots of other advantages to quitting too: **Use a Stop Smoking calculator** to find out how much money you could save - on average it's £2,000 a year. It's never too late to quit. Many people try to stop using willpower alone, but it's much easier if you have the right help.

You can find a range of support on the **Healthy Cornwall** website: www.healthycornwall.org.uk.





Freedom to move needs you to look after your bones and joints – your musculoskeletal health

Since 1976 Cornwall Arthritis Trust has been enabling people suffering from arthritis and other musculoskeletal conditions to live their best life, and to ultimately conquer these conditions.

Visit <https://www.cornwallarthritis.org.uk> to find how to get help and support to enable you to manage your arthritis or other musculoskeletal problem.

- Find advice on living with and managing your arthritis or other musculoskeletal conditions
- Access up to date information about keeping active, financial help and clinical information
- Check out information on the latest research
- Find local help and support
- Subscribe to our newsletter

Top tips to look after your musculoskeletal health

- Be active to stay fit
- Eat healthily - calcium and fish oils are good for bones and joints
- Maintain an ideal weight
- Avoid smoking and excess alcohol
- Avoid stress
- Avoid risks - recognise risks of falling or injuries and try and avoid them
- Seek support if you experience pain or symptoms that affects your everyday activities including work





Eat well

Eating well can help to prevent, and aid recovery from illness. Eating regular hot meals will keep your energy levels up and drinking hot drinks will help you to feel warmer for longer. It's a good idea to stock up on food cupboard essentials to ensure you do not have to go out when it's icy. You can get some ideas for healthy recipes on a budget online at: endchildfoodpoverty.org/full-time-meals and www.nhs.uk/healthier-families/recipes

You're more likely to get a cold in winter so making sure your immune system is in tip-top condition is important. As part of a healthy diet, aim to have at least five portions of a variety of fruit and vegetables per day. Fruit and vegetables are a great source of essential vitamins and minerals. Fresh, frozen, dried and canned fruit or vegetables all count towards your five portions a day and winter vegetables can be made into a soup or stew for a comforting meal.

• Stay •
healthy tip

A breakfast like porridge on a cold morning can help to give you energy and help you to feel fuller for longer. If you are having difficulties preparing your own meals, why not consider other options such as using meals on wheels or a frozen meal delivery service, so you can eat at the time of your choosing.

If you, or someone you care for, are losing weight without meaning to, or you are not eating well and are concerned about your nutrition, speak to your nurse or GP.



Eatwell Guide

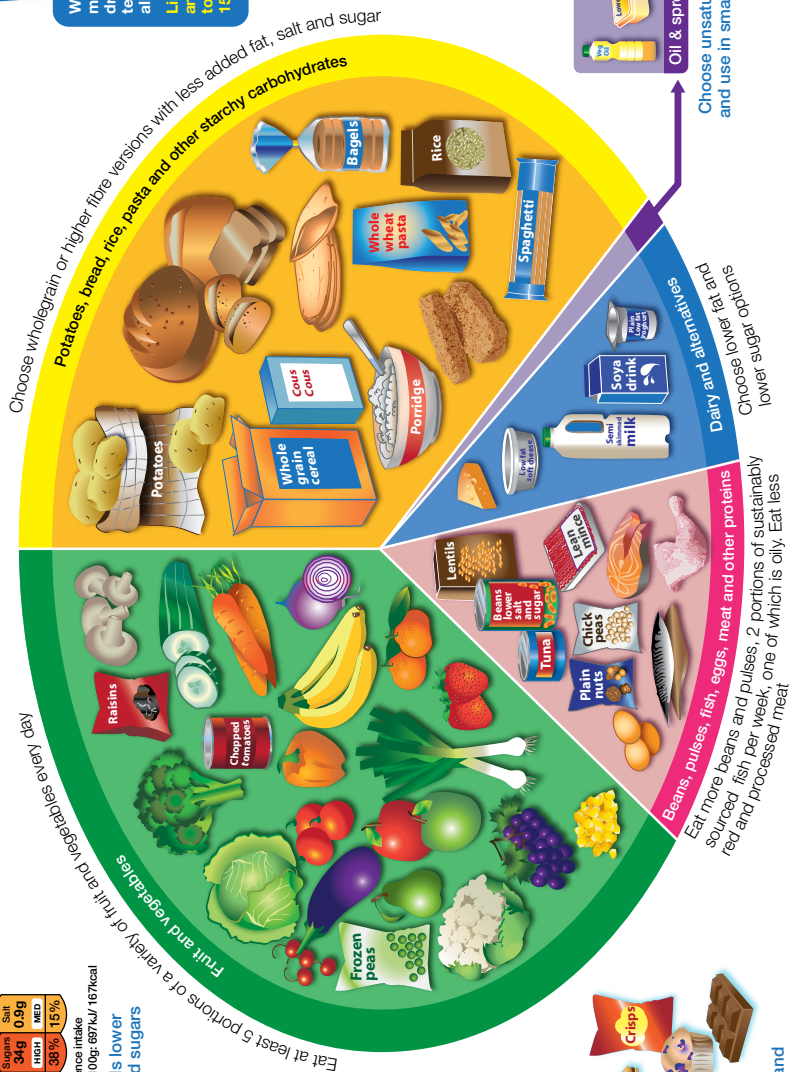
Check the label on packaged foods

Each serving (150g) contains					
Energy	Fat	Sugars	Salt		
1048kJ 250kcal	3.0g	1.3g	24g	0.9g	
13%	4%	7%	48%	38%	15%
	LOW	LOW	HIGH	MED	

Typical values (as sold) per 100g: 697kJ / 167kcal of an adult's reference intake

Choose foods lower in fat, salt and sugars

Use the Eatwell Guide to help you get a balance of healthier and more sustainable food. It shows how much of what you eat overall should come from each food group.



Water, lower fat milk, sugar-free drinks including tea and coffee all count.

Limit fruit juice and/or smoothies to a total of 150ml a day.

Per day 2000kcal 2500kcal = ALL FOOD + ALL DRINKS

Food banks

There are a number of food banks that can supply food to those in financial crisis. Contact <https://letstalk.cornwall.gov.uk/help-with-food>

Support if you need food

Cornwall Council can help and offer guidance on accessing our Local Welfare Assistance schemes and/or Crisis and Care awards.

We also have a range of support through our network of Family Hubs, who can signpost people to services in their local area.

We also have, through our partnership with Citizens Advice, money advisors in each locality. To find out more, please visit www.cornwall.gov.uk/moneyworries where you'll find the 'Worrying About Money' leaflet, or www.worryingaboutmoney.co.uk/cornwall.

Healthy Start Card

Are you more than 10 weeks pregnant? Do you have a child under 4 years old? You could be entitled to a Healthy Start Card, which is topped up with money every week to spend on milk, fresh, frozen and tinned fruit and vegetables, fresh, dried, and tinned pulses such as lentils or beans and infant formula. The Healthy Start Card can also be used to collect free Healthy Start vitamins from Family Hubs across Cornwall.

www.healthystart.nhs.uk



SAFE

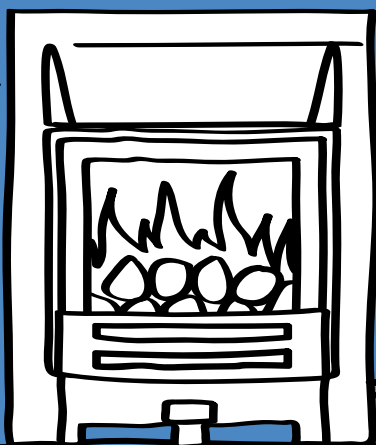


Snow and ice

Cornwall Council warns about any disruption owing to severe cold weather – such as school and road closures – on their website: www.cornwall.gov.uk

This page will be updated frequently in the event of severe cold weather in Cornwall. If you use X, you can follow updates using the tag **#CCsnow **#CCfloods****

please get me serviced every year!



Visit the **Cornwall Council** website and search for “**keeping safe**” for information on how to drive safely, how to prepare for winter, and what to do in emergency situations such as flooding. Get Ready for Winter from the **Met Office**, have plenty of useful tips and information to help you prepare for and deal with extreme weather. If you do not have access to the internet, you can call the **Met Office** for up-to-date local weather forecasts.

Cornwall Fire and Rescue Service

The majority of fires are accidental and could have been prevented by following a few simple measures which can help reduce the risks. It is important to be aware of possible fire hazards around the home, and to then take precautions to protect yourself and your family.

To see if you can have a free home fire safety check visit complete the online home fire safety check www.safelincs.co.uk/hfsc/ the easy-to-follow online tool will offer tips and advice on the steps you can take to reduce these risks and if you are eligible for a free visit someone from CFRS will be in touch to arrange an appointment.



Carbon monoxide

Carbon Monoxide (CO) is a colourless, odourless, tasteless, poisonous gas which is produced when fuels such as gas, oil, coal and wood don't fully burn. If you have cookers, heaters, boilers, a gas fire, an open fire or log burner which uses any of these fuels you need to fit a CO detector.

- ★ Have your gas appliances checked annually by a gas safe registered engineer. Check their I.D card on both sides to ensure they are competent to carry out the work.
- ★ have your chimney swept annually.
- ★ never ignore symptoms, particularly if more than one person in the home is feeling them.

What are the symptoms of Carbon Monoxide Poisoning?

- * The most common symptoms include headaches, dizziness, tiredness, nausea and shortness of breath.
- * symptoms can be mistaken for flu, viruses or even food poisoning (however unlike flu, CO poisoning does not cause a high temperature).
- * if someone is suffering from these symptoms whilst at home but is fine elsewhere, they may be suffering from CO poisoning.



What to do if your carbon monoxide alarms sound or you suspect a leak:

- * Stop using all appliances, switch them off, and open doors and windows to ventilate the property.
- * evacuate the property immediately – stay calm.
- * call the gas emergency number 0800 111 999 to report the incident – or Health and Safety Executive (HSE) Gas Safety Advice Line on **0800 300363**.
- * seek immediate medical help and advice if you think you have been exposed.
- * if you are feeling unwell after being exposed to carbon monoxide, go immediately to your local accident and emergency department (A&E).
- * never go back into the property- wait for advice from the emergency services.

Private Sector Housing

If you rent your house from a private landlord then it should not be excessively cold, damp or hazardous to your health in any way. If the heating does not work adequately or your home becomes cold very quickly after the heating goes off, or you simply keep tripping on an uneven step you should tell your landlord in writing. If they do not help you to improve the situation, please call **Cornwall Council's** Private Sector Housing Team to assist you.

Condensation and mould

Damp housing and poor ventilation can lead to the growth of mould (and mould-feeding mites) on walls and furniture which can increase the risk of respiratory illness.

Condensation is a common cause of mould and may be caused by a lack of adequate heating and/or suitable ventilation, and excessive moisture in the air. For advice on condensation and mould, contact **Community Energy Plus** or see their online advice guides: www.cep.org.uk/resources/factsheets-and-leaflets.

Insulation and draught proofing will help to keep your home warm so that it is less prone to condensation and mould, but ventilation is equally important. Open windows, or use extractor fans, in the kitchen or bathroom when needed. Dehumidifiers are also effective in removing moisture from the air before it has a chance to condense on cold surfaces and lead to mould growth.

Burn Better, Breathe Better - Find out how to burn better with your indoor stove, wood burner or open fire, please make sure you:

- ★ Check it regularly.
- ★ sweep it professionally and at least once a year.
- ★ feed it the right fuels.

For more information please go to the DEFRA website <https://uk-air.defra.gov.uk/library/burnbetter/>

Safety checks

Chimney Sweeping - Chimney fires are a frequent occurrence every year. Many solid fuel fired appliances are expected to “work” 24 hours a day, 365 days a year, keeping us warm and supplied with constant hot water. All chimneys must be swept at least once a year, however, if your appliance is used continuously throughout the year, or burns wood and coal, more frequent sweeping is recommended. **Contact the Solid Fuel Association.**



Supportmatch Homeshare

Affordable - Flexible
Reliable live-in help

- Do you live alone?
- Do you have a spare room?
- Would you like help with household tasks such as cooking, cleaning and shopping?
- Would you like the benefit of a friendly companion?

Cornwall Council is partnered with **Supportmatch Homeshare** and Cornwall's **Voluntary Sector Forum** to help people live independently at home.

Supportmatch Homeshare matches homeowners who would like some companionship and help with household tasks, such as shopping or cleaning, with people who need an affordable home.

So, if you or someone you know has a spare room, or you would like to share a home with someone needing practical support and save money on accommodation, why not see if the service could be right for you?

Find out more at www.supportmatch.co.uk

Gas safety checks

Your gas supplier may be able to provide you with a free gas safety check. Contact your energy supplier for more information.

Boiler servicing

Your boiler should be serviced at least once a year to run safely and efficiently. Having a service could save money by using less fuel, avoiding unexpected breakdowns, reducing expensive repair bills and extend the working life of your boiler.

Trips and falls

In winter you need to be particularly careful to avoid trips and falls. Some 50,000 people fall each year, many during the winter period. Ice, snow, high winds and wet leaves can make walking outside hazardous. Please avoid going out in severe weather unless it is absolutely necessary.

- ★ Wear sturdy footwear, even indoors. Hallways can become slippery when wet weather arrives, but strong, supportive shoes with non-slip soles will help you stay on your feet. While a good pair of slippers is fine for short periods, try to wear shoes around the house instead.
- ★ dress warmly, but be careful to make sure clothing doesn't trail.
- ★ make sure any walking aids you use are checked for wear and tear and have fresh grips. If you use a walker or wheelchair, get the brakes checked.
- ★ keep food and medicine cabinets stocked up so that you can stay in.

For practical tips and expert advice to help you stay steady on your feet this winter visit the **Cornwall Steady On Your Feet** website.

Launching this winter, the website offers guidance on preventing falls, staying active, and accessing a range of local support. It's an invaluable resource for maintaining independence and wellbeing throughout the colder months.

Visit www.steadyonyourfeet.org to find out more.



Transport for Cornwall

Get
help with
travel

Getting from A to B

If you need transport to get to your hospital appointment, **Age UK Cornwall Community Transport - 01872 223388** can take folding wheelchair and walking-frame users. There is a charge for this service, payable per mile. **Volunteer Cornwall** provide a similar car service, again a charge per mile is payable.

Cornwall Public Transport represents all public transport operators running services in Cornwall.

Go Cornwall want to make travelling by bus easier for everyone. If you use a scooter and are not sure if it will fit on the bus, you can arrange a home assessment. If you have trouble seeing your destination, you can use the “help-me” cards. Contact **Cornwall Bus accessibility team** on **0808 196 2632** or visit **www.gocornwallbus.co.uk**

If you live in Cornwall and you are an older person or have a permanent disability you may be able to get **a free bus pass**.

You can check your eligibility online at **LINK**, or call the Concessionary Fares team on **0300 1234 222**.

For people who have difficulty with accessing conventional public or private transport there are a number of alternative options through **Community Transport** visit **www.cornwall.gov.uk**

If the weather is particularly bad and you can't get out of the house, **Volunteer Cornwall's** 'Winter Friends' may be able to help you with things like delivering essential supplies and prescriptions. Contact **Volunteer Cornwall** to discuss your needs.



Need help with transport to get to an NHS appointment?



**There is help
available**

Local patient transport
schemes could help you
and you may be eligible
for NHS funded transport



AgeUK Community Transport
01872 223388



Volunteer Cornwall
01872 265300



For full details and contact numbers, scan the
QR code or visit
cios.icb.nhs.uk/health/patient-transport/

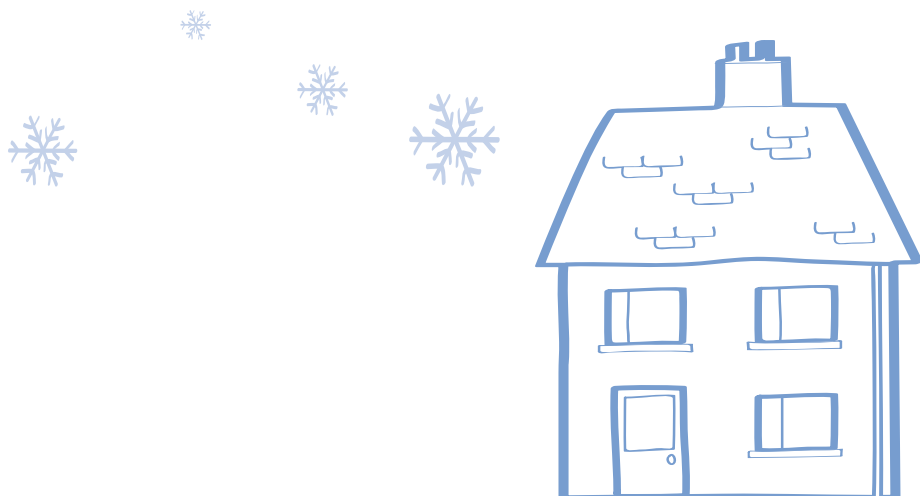


Emergency housing and homelessness

There is help available for people who are homeless, or at risk of becoming homeless, to make informed choices about their housing solutions. It is very important that if you feel you may be threatened with homelessness, you contact **Cornwall Council Housing Options** as soon as possible at the following link www.cornwall.gov.uk/housing/homeless-or-at-risk or by phone **0300 1234 161**

If you are rough sleeping or would like to report a rough sleeper, you can alert the Local Authority Outreach services by:

1. Making a Streetlink referral on StreetLink - Connecting people sleeping rough to local services (thestreetlink.org.uk) or scan the QR code
2. Phone **0300 1234 161**
3. Email roughsleeperaccessservice@cornwall.gov.uk



Domestic abuse

Domestic abuse **can be a single incident or a pattern of behaviours**, such as physical abuse, sexual abuse and/or violence, threatening behaviour, control and coercion, financial abuse, emotional and psychological abuse. **The majority of victims are women, but men can also experience abuse**, and everyone deserves to feel safe and free from abuse, violence and fear.

If you're experiencing domestic abuse and feel frightened of, or controlled by, a partner, an ex-partner or family member, **it's important to remember that it's not your fault. There is support available for you** and any children who are also impacted by domestic abuse within the family. There is also support available to help people who want to change their behaviour and develop healthier relationships.



In Cornwall we have a wide range of services for people impacted by domestic abuse and sexual violence:

Safer Futures is the Cornwall and Isles of Scilly Domestic Abuse and Sexual Violence Service. It provides support and advice for individuals who have experienced domestic abuse or sexual violence and those wishing to change their behaviours.

Call the helpline on **0300 777 4777**. Helpline hours of Mon-Fri 9am-9pm, Sat 9am-5pm or visit **saferfutures.org.uk**

Devon and Cornwall Sexual Assault Referral Centres (SARC) provides support and advice on sexual assault.

Call the helpline on **0300 303 4626**



Cornwall Refuge Trust provides support, advice and accommodation for individuals experiencing domestic abuse. Call the 24 hour helpline on **01872 22 5629** or visit www.cornwallrefugetrust.co.uk

West Cornwall Women's Aid Helpline provides support, advice and accommodation for women impacted by domestic abuse and sexual violence. Call **01736 36 7539** or visit <https://wcwaid.co.uk/>

The Women's Centre Cornwall Helpline provides support and advice to women who have experienced domestic abuse and/or sexual violence or abuse. Call **01208 77099**. Helpline opening hours Mon-Fri 10-1pm and Mon 6-9pm or visit womenscentrecornwall.org.uk

There are also national helplines:

The National Domestic Abuse Helpline provides support, advice and information on refuges outside of the County. Call the 24 hour helpline on **0808 200 0247**

Mankind Helpline provides support and advice to males experiencing domestic abuse. Call **01823 33 42 44** or visit mankind.org.uk

Intercomtrust.org.uk supporting our Lesbian, Gay, Bisexual and Trans+ communities. Confidential Helpline **0800 612 3010**
Open 9:00am - 4:00pm Monday to Friday

If you're in immediate danger, call 999

If you're unable to speak when you dial 999, use 'The Silent Solution': Wait for the operator to speak and type 55 on your keyboard. This will alert the operator that you are in need of help.

HAPPY



Winter can be a time of festive joy, celebrations and time with family and friends. But for some people it can bring stress, sadness and anxiety.



General Wellbeing

There are more than 50 local community hubs where people can find warmth, friendship and positive things to do, as well as get help and advice on all kinds of topics, such as food, employment, housing, money, health and wellbeing. Some hubs have specialist support available for falls prevention, dementia, diabetes, mental health, dealing with chronic pain, cancer, and reducing digital exclusion.

Find out more about community hubs on the Volunteer Cornwall website: **www.volunteercornwall.org.uk/how-we-help/in-the-community/community-hubs**

1 IN 4

people experience mental illness
at some point in their lives

Mental Wellbeing

With one in four people in Cornwall affected by mental illness at some point in their lives, we probably all know someone affected; whether they are a family member, friend or colleague. Being aware of those around us and their thoughts and feelings can make a huge difference. If you know someone who is on their own this winter, perhaps you could give them a call, visit or invite them to come and see you.

If you are worried about your own or someone else's mental health you can call the Cornwall and Isles of Scilly 24/7 NHS mental health response line. It's free to access by anyone, any age, any time, day or night. Dial NHS 111 and select the mental health option. You can also talk to your GP team.

People in Mind is a multiagency service that offers personalised 1:1 and peer mental health support to people aged 16+ in Cornwall and Isles of Scilly. Areas of support include:

Mental health, social isolation and self-harm support. More information can be found here: www.peopleinmind.org.uk and access to this service is through the Community Gateway on **01872 266383** or welcome@kernowgateway.org.uk

Free Community Gateway helpline

The helpline offers practical help to improve your wellbeing, provide advice on mental health support, community activities, local hot food and warm spaces, and friendly staff can connect you to a range of support services in your local community. Open 7 days a week from 8am to 8pm, call **01872 266383** or email welcome@kernowgateway.org.uk

Find out about the five steps to mental wellbeing online at:
www.nhs.uk/mental-health



You can also visit our mental health webpages:



www.cornwall.gov.uk/health-and-social-care/mental-health/ for more help and advice on mental health, including a range of psychological wellbeing guides.



www.cornwall.gov.uk/wellbeingguides which include information on support services and useful resources to help you maintain your mental wellbeing and are available in different languages, BSL/large print formats and in Easy Read.



www.citizensadvicecornwall.org.uk/debt-advice for debt advice.



www.pentreath.co.uk promotes good mental health in Cornwall.

The **Cornwall Memory Cafe Network** comprises 40+ memory cafes throughout Cornwall, which are independently run community groups, led by 400+ volunteers. They enable people living with memory loss and their carers to live well through creating welcoming, safe spaces in their communities. They provide opportunities for social interaction, sharing experiences, building connections, quality time, learning, gaining access to resources, cognitive and physical activity, all leading to enhanced emotional and physical wellbeing. Memory Cafes are free to attend, and they welcome people with, or without a formal dementia diagnosis (cafe dependent). They generally run for two-hour sessions and can vary in frequency, such as fortnightly or monthly.

For more information and to locate your nearest cafe visit:

www.cornwallmemorycafes.co.uk/

Humans Cornwall is a person-centred support planning and brokerage service, supporting people who are returning home from hospital, or who may be at risk of being admitted. The service provides free, holistic and personalised support to people (18+) over their reablement period for up to 6 weeks. This includes helping to stabilise once home, ensuring your warmth, safety and comfort, enabling you to maximise your wellbeing.




We can support in many ways, while you recover. If you are an unpaid carer, we can also provide temporary care for loved ones, or animals, during your time in hospital.

Patients can self-refer to Humans Cornwall, if they have an upcoming operation or in the 7 days following their discharge, via the patient line number. Tel: **01736 697040**

For more information, visit: **www.humans-cornwall.co.uk/**

Mental Health Safety Plans are tools designed to support people when they are struggling: Think of them as a ‘mental health first-aid kit’. A Mental Health Safety Plan includes different things that will help during a crisis. Take a look at our website for a how-to guide on the creation and use of safety plans, as well as useful templates and other resources:
www.cornwall.gov.uk/mhsafetyplans



**We're here
for you...**

NHS Talking Therapies offers free, confidential talking therapies for people who are registered with a GP in Cornwall and Isles of Scilly aged 16+.

Referrals can be via a GP/Health Professional or you can call **01208 871905** or visit
<https://www.cornwallft.nhs.uk/talking-therapies>

WorkWell is free, friendly, confidential support service for people finding work difficult due to their physical or mental health.

WorkWell coaches offer personalised advice and easy-going conversations with someone who can help you stay in or get back to work. For some that might look like confidence building tips, for others it might be ideas for ways to talk to your employer about making adjustments at work.

You can either be referred to a coach by someone you know, like a GP, or you can ask to connect with a WorkWell coach yourself.

Find out more or connect with a coach by visiting the website
<https://cornwallvsf.org/connecting/services/welcome-to-workwell/>

Samaritans is a confidential emotional support service; available 24 hours a day to anyone who is experiencing feelings of distress or despair, including those which may lead to suicide. Samaritans volunteers listen in confidence to anyone in any type of emotional distress, without judging or telling people what to do. Samaritans doesn't offer advice, but by encouraging people to talk about their feelings the service can help them explore all the options they have.

You can call the **Samaritans** any time of day or night if you're feeling suicidal. It's really important to tell someone how you feel and talking can ease the mental and emotional pain you may be experiencing. Call **116 123** or text '**Shout**' to **85258**.

The **Orange Button Community Scheme** is a way of identifying people who have undertaken mental health first aid or suicide prevention training. The distinctive orange badge shows that these volunteers are OK to say or hear the word suicide, and can listen without judgement. Anyone struggling with mental ill health, having thoughts of suicide or worried about a friend or family member, can ask for information and support.

Find out more about the scheme, including how it works and how to get involved at **www.cornwall.gov.uk/orangebutton**



WINTER Wellbeing

Social Prescribing is a method of linking people with non-clinical sources of support within the community via a dedicated Link Worker. Link Workers are now working in the majority of the GP practices across Cornwall and the Isles of Scilly. Please contact your GP practice if you wish to talk to a Social Prescribing Link Worker for help and support.

For support with drug and alcohol use please call **With You** (previously We Are With You) on **0333 2000 325 (24 hours)**

Website and Live Chat: **www.wearewithyou.org.uk/**

For anyone under 18 who would like advice and/or support, please contact **YZUP** on **01872 300816**



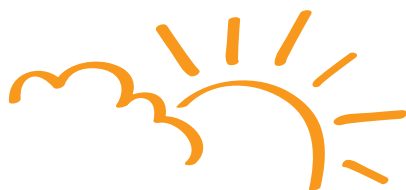
Hate Crime

Safer Cornwall offers support for any person that finds themselves a victim of an incident motivated by hostility or prejudice.

Visit **<https://safercornwall.co.uk/what-we-do/hate-crime/>**

Safer Cornwall 24 hour helpline: 0800 138 1625

Feeling SAD in winter



SAD (Seasonal Affective Disorder) is a type of winter depression that affects around seven percent of the population every winter; in particular during December, January and February. **The SAD Association** (SADA) is a voluntary organisation and registered charity which informs, supports and advises sufferers of the condition.



Libraries

There's so much on offer at **Your local library** (including virtual services and mobile libraries.) to entertain all ages over the winter months: Children's story time sessions, Bookstart Rhymetimes and computer/internet access to name a few!

Visit: www.cornwall.gov.uk/libraries-museums-and-archives/libraries/your-local-library

Help for
young people



StartNow is a multimedia programme packed full of interactive resources to empower young people to look after their own mental wellbeing. The platform, created by young people, also provides information about where to get help, how to ask for help and how to have your voice heard in schools and the wider community. So whether you would like a virtual dice to help you explore the Five Ways to Wellbeing; an online personal wellbeing and resilience

action plan; some inspiring self-care tips or opportunities to get involved with improving services for children and young people, check out StartNow Cornwall online at www.startnowcornwall.org.uk



Combating loneliness and improving wellbeing

Royal Voluntary Service delivers personal and practical support through local volunteers to support older people. This includes a free Home Library Service, run in partnership with Cornwall Library Service. For those unable to go to the library, volunteers meet them in their home to collect and return library books.



They also run luncheon and social clubs for people to get together and socialise, and a community meals-on-wheels service around the Falmouth and Redruth areas, and community transport for social and medical appointments.

It's good to talk

Inclusion Matters, Cornwall Rural Community Charity (CRCC) and Partners (Age UK Cornwall, Disability Cornwall, Inclusion Cornwall, Digital Inclusion CC) Inclusion Matters help people with health and wellbeing needs to:



- ✱ Develop a sense of belonging.
- ✱ Self-manage their health and wellbeing.
- ✱ Develop skills to help with daily living.



This service will help people to identify local support networks and activities and to make links in their local community. This will include linking people to volunteers that will offer wellbeing support to people in their own homes and to people leaving hospital. It will also include helping people to identify opportunities to get involved in volunteering and local projects.

Age UK Cornwall runs a dedicated Helpline, which provides information and advice helpline that connects individuals to social groups, clubs and activities.



The British Red Cross have a new service that aims to help people who are lonely or socially isolated in the Camborne, Redruth area.



Volunteer



Volunteering is something you can do all year round and it can help you in a number of ways:

- ✱ Keeping you active thereby improving your physical and mental health and wellbeing.
- ✱ Helping you make new friends and social networks.
- ✱ Allowing you to gain new skills, experience and abilities – useful whether you are looking for work or retired.
- ✱ Offering a chance for you to play a part in your local community.



Age UK Cornwall depends on volunteers to deliver essential services to the local community. They offer a variety of volunteering opportunities tailored to your interests, including Volunteer Driving, Community Hub Support, and Gardening roles. If you can spare any time, no matter how little, reach out to them today.

Cornwall Rural Community Charity (CRCC) with its partners DisAbility Cornwall, Promas CIC, Age UK CIOs and Barnardos, deliver a range of high quality support services for unpaid Carers throughout Cornwall, free of charge. These services include, emotional support, information, advice and guidance, statutory assessment, access to grants, community support, carer specific training and dedicated services for Young Adult Carers (16-25 year old Carers) and Young Carers.

Volunteers are the backbone of the **Citizens Advice Cornwall** charity and work in a variety of interesting roles including advisers, office administration, fundraisers and trustees. No prior experience in these areas is necessary and full training and on-going support is offered. You work as part of a friendly, close-knit team with a passion for helping people in your community in their time of need.

Opportunities are available across the county and travel expenses are paid. For more information visit: **citizensadvicecornwall.org.uk/volunteer-with-us**

Volunteer Cornwall

A charity dedicated to building social capital and developing the wellbeing of individuals and communities in Cornwall. We do this by working in collaboration with a wide range of organisations to promote and support active citizenship and voluntary action covering the emotional, social, environmental and economic needs and opportunities in Cornwall.

Volunteering is something that you can do all year round and it can help you in a number of ways:

- ★ Keeping you active thereby improving your physical and mental health and wellbeing.
- ★ Helping you make new friends and social networks.
- ★ Allowing you to gain new skills, experience and abilities - useful whether you are looking for work or retired.
- ★ Offering a chance for you to play a part in your local community.

Volunteer Cornwall is like the Jobcentre of the voluntary sector – matching people who want to volunteer with organisations that need volunteers. To find a volunteering opportunity that's right for you from the hundreds on offer, go to **<https://opportunities.volunteercornwall.org.uk/>**

Community Gateway is a dedicated service available to everyone. It provides access to a wide range of professional voluntary sector support. Open 8am - 8pm, 7 days a week, 365 days a year.

Cornwall's charities and community groups are working together to support people through Community Gateway. It's a partnership of more than 50 voluntary organisations across the health and care system in Cornwall and the Isles of Scilly and has been working with NHS Cornwall to offer help where it's needed most.

In response to increasing living costs and pressures across the health and care system in Cornwall and the Isle of Scilly, a unique partnership of more than 50 voluntary organisations has been working with NHS Cornwall and the Isle of Scilly Integrated Care Board to offer ongoing support to communities across the Duchy.

It provides a 'gateway to independence', working with people to identify their needs and put appropriate packages of support in place. The Gateway aims to create personalised plans that prevent hospital admissions, reduce social isolation, and improve wellbeing. It also connects people to mental health support, community activities and wider winter initiatives including hot food and warm spaces.

People can access Community Gateway via a dedicated telephone line (01872 266383) and email **welcome@kernowgateway.org.uk**

It has trained professional staff who can find local support that's right for individuals. In addition, staff members in the community will be available to offer one-to-one and group support.

Cornwall Carers Service

A carer is anyone who provides unpaid care, for a family member, friend or neighbour who, due to illness, disability, a mental health issue or an addiction, cannot manage without their support. Carers have a huge impact both directly, on the lives of the people that they care for and indirectly in the contribution that they make towards society. We believe that carers should have the opportunity to pursue their own goals and aims alongside their caring role.

Money and Work

Managing money affects many people in Cornwall each year who feel anxious about debt, unemployment, job security or the risk of losing their home. If you are feeling very worried about any of these things, try talking to someone. Visit **www.cornwall.gov.uk/costofliving** to check that you are receiving everything you are entitled to.

Age UK Cornwall and Isles of Scilly offers a free and confidential information and advice service for older people, their families and carers. Information and advice advisors are available for Attendance Allowance support from Monday to Friday, 10-12pm on **01872 266888**. However, for any further advice and support, you can contact the Community Gateway, 8am-8pm, 7 days a week, 365 days a year on **01872 266383**.



Connect with others

Boost your self-confidence
by learning new skills and
make a connection in your
local community.

Community Gateway

A helpline connecting
you to a wide range of local
community support, warm
spaces and activities.

What can we help with?

- Wellbeing activities
- Mental health support
- Healthy food and refreshments
- Debt advice
- Hospital to Home service
- Finding local activities and community hubs



SCAN ME

01872 266383

email: welcome@kernowgateway.org.uk

8am - 8pm

7 days a week

365 days a year

Cornwall Council can help if you are worried about paying your Council Tax. It is called the Exceptional Relief Fund. If you are of working age and receive Council Tax Support go online for further information or call the Benefit Contact Centre.

Benefit Contact Centre
0300 1234 121

Cornwall Council can help if you are worried about paying your rent. It is called the Discretionary Housing Payment. If you are receiving rent payments from Universal Credit or Housing Benefit payments which are less than your rent payment and need help to cover the shortfall, go online for further information or call the Benefit Contact Centre.

Disability Information and Advice Line (DIAL) can help if you need information, advice, and practical support from specialist advisers including a dedicated in-house Citizens Advice disability specialist.

DIAL can provide support with:

- ✱ money and welfare entitlements
- ✱ health and wellbeing
- ✱ housing and home environment
- ✱ independent living and equipment
- ✱ training
- ✱ volunteering and employment
- ✱ social and leisure enquiries
- ✱ rights and discrimination



DIAL is also a third-party reporting centre for hate crime and is staffed by professional, friendly advisers. It's open Monday to Friday, 9am-4pm. Call **01736 759500** or email **advice@dialcornwall.org.uk**



Cornwall Council Crisis and Care (discretionary) Awards may buy goods or services on your behalf. Crisis Awards of up to £1,500 can help people in emergency or disaster situations with their immediate needs. **Care Awards** help vulnerable people to help them live as independently as possible in their community. The Crisis and Care Award application form is available online or call the Benefit Contact Centre.

Citizens Advice Cornwall offer free, confidential and independent advice by phone or webchat for many issues including debt, welfare benefits (including help to complete benefit claim forms) and housing.



You can find out what benefits you might be entitled to by contacting **Jobcentre Plus**. If you are under threat of redundancy, or have been recently made redundant and find that there is a specific gap in your knowledge or experience that is restricting your chances of getting work in the local labour market, **Jobcentre Plus** may be able to help. If the gap could be addressed by some short duration training, call the team for more information.

Veteran's Gateway puts veterans and their families in touch with the organisations best placed to help with the information, advice and support they need - from healthcare and housing to employability, finances, personal relationships and more.

Royal British Legion provides help and support to service men and women, veterans, and their families. This includes financial support during debt and emergency situations, advice on resettlement and training, welfare breaks, advice on benefits and helping with home adaptations.



Inclusion Cornwall has information on where to access a wide range of support moving you from welfare, towards and into work. **Inclusion Cornwall** can offer advice on other matters such as:

- * housing
- * employment and training
- * social, economic and environmental inclusion
- * advice on grants available i.e. heating upgrades or white goods

Inclusion Cornwall is a partnership of organisations and services committed to social justice. We challenge inequality, join-up services and celebrate difference, striving for a Cornwall where people, communities and services work together for better outcomes. Why not follow us on X and Facebook, to keep up to date with support available.



INFORMED

An alphabetical list of contacts to help you stay safe and well this winter.

A Active Plus

www.activeplus.org.uk

☎ 01326 567 174

✉ admin@activeplus.org.uk

Adult Social Care

www.cornwall.gov.uk/health-and-social-care

☎ 0300 1234 131

Age UK Cornwall

www.ageuk.org.uk/cornwall

☎ 01872 266 383

Age UK Cornwall Community Transport

☎ 01872 223388

AskSARA

www.cornwall.gov.uk/asksara

☎ 0300 1234 131 - adults

☎ 0300 1234 101 - children

B BBC Cornwall

www.bbc.co.uk/cornwall

Benefit Contact Centre (Cornwall Council)

www.cornwall.gov.uk

☎ 0300 1234 121

British Red Cross

www.redcross.org.uk

Mobility Aids

☎ 01235 552 665

C Citizens Advice Cornwall

www.citizensadvicecornwall.org.uk

☎ Freephone 0800 144 8848

Textphone: 0800 144 8884

☎ Free Debt Helpline 0800 240 4420
or text Advice Debt to 78866

For details of drop-in sessions:
www.citizensadvicecornwall.org.uk/get-advice

Community Energy Plus

www.cep.org.uk

☎ 0800 954 1956

✉ advice@CEP.org.uk

Cornwall Carers Service

www.cornwallcarers.org.uk

☎ 01736 756655

✉ hello@carersadvice Cornwall.org.uk

Cornwall Community Directory

www.supportincornwall.org.uk

Cornwall Council

www.cornwall.gov.uk

☎ 0300 1234 100

Cornwall Council Housing Options

☎ 0300 1234 161

<https://www.cornwall.gov.uk/housing/homeless-or-at-risk/>

Cornwall Council Home Solutions Team

www.cornwall.gov.uk/housing/home-solutions

☎ 01872 224 707

Cornwall Fire and Rescue Service

(Home Fire Safety Check) Living Safe and Well

www.safelincs.co.uk/hfsc/
24hr helpline

☎ 0800 358 1999

Cornwall Link

(Connecting you to your community)

www.cornwall-link.co.uk
☎ 01872 266 383

Cornwall Neighbourhoods for Change

(Winter crisis support; winter fuel payments; housing support; benefit and debt support and larder)

www.cn4c.org.uk
☎ 01209 310610

Cornwall Partnership NHS Foundation Trust

www.cornwallft.nhs.uk
☎ 01208 251 300 (Switchboard)

Cornwall Public Transport

www.cornwall.gov.uk
☎ 0300 1234 222

Cornwall Rural Community Charity (CRCC)

www.cornwallrcc.org.uk
☎ 01736 334667

Council of the Isles of Scilly

www.scilly.gov.uk
☎ 0300 1234 105



Devon and Cornwall Police

www.devon-cornwall.police.uk
☎ 101 (non-emergency)

DisAbility Cornwall and Isles of Scilly

www.disabilitycornwall.org.uk
☎ 01736 759500



Family Information Service

☎ 0800 587 8191
✉ fis@cornwall.gov.uk



Health and Social Care

www.cornwall.gov.uk/health-and-social-care
☎ 0300 1234 131

Healthy Cornwall

www.healthycornwall.org.uk
☎ 01872 324200

Healthy Start

www.healthystart.nhs.uk
☎ 0300 330 7010
(find out about call charges)
Other ways to contact us:
www.healthystart.nhs.uk/contact-us/

Housing and Homelessness

www.cornwallhousing.org.uk
☎ 0300 1234 161

I Inclusion Cornwall

www.inclusioncornwall.co.uk

☎ 01872 326 440

✉ hello@inclusioncornwall.co.uk

Inclusion Matters

[https://cornwallrcc.org.uk/](https://cornwallrcc.org.uk/inclusion-matters)

inclusion-matters

☎ 01872 266383

J Jobcentre Plus

www.gov.uk/contact-jobcentre-plus

☎ 0845 604 3719

K Kernow Credit Union

www.kernowcreditunion.co.uk

☎ 01209 314449

L Learning Disability Liaison Team

[www.cornwallft.nhs.uk/learning-](http://www.cornwallft.nhs.uk/learning-disability-team)

disability-team

☎ 0300 1234 131

Lendology

(Cornwall Council Green Loans)

[www.lendology.org.uk/contact-](http://www.lendology.org.uk/contact-lendology/)

lendology/

☎ 01823 461099

LiveWest

www.livewest.co.uk

☎ 0300 123 8080

Living Made Easy

<https://livingmadeeasy.org.uk/>

☎ 0300 999 0004

M Meal Providers

Oakhouse Foods

www.oakhousefoods.co.uk

☎ 0333 370 2514

Wiltshire Farm Foods

www.wiltshirefarmfoods.com

☎ 01326 378444

Met Office

www.metoffice.gov.uk

☎ 0370 900 0100

N NHS 111

www.nhs.uk

☎ Dial 111 free

National Domestic Abuse Helpline

www.nationaldahelpline.org.uk

☎ 0808 2000 247

National Energy Action

www.nea.org.uk

☎ 0800 304 7159

National Energy Foundation

www.nef.org.uk

☎ 0800 107 0044

National Grid

(previously Western Power Distribution)

General contact enquiries:

☎ 0800 096 3080

Power cuts and emergencies:

☎ 0800 6783 105 or 105

Web chat: www.nationalgrid.co.uk

Minicom: 0845 601 2318

National Highways

www.nationalhighways.co.uk

☎ 0300 123 5000

NHS Cornwall & Isles of Scilly

cios.icb.nhs.uk

☎ 01726 627 800

NHS Mental Health 24/7 Response Line

☎ NHS 111 and select the mental health option

NHS Talking Therapies

Cornwall Partnership NHS

Foundation Trust

cornwallft.nhs.uk/talking-therapies

☎ 01208 871905

Out of Hours GP services

☎ Dial 111 free

Patient Advice Liaison Service (PALS)

Cornwall Partnership NHS Foundation Trust PALS

☎ 01208 834 620

RCHT PALS

☎ 01872 252 793

Pentreath Ltd.

www.pentreath.co.uk

☎ 01726 862 727

Private Sector Housing Team

www.cornwall.gov.uk/housing

☎ 0300 1234 582

✉ psh@cornwall.gov.uk

Rough Sleeper Services

www.streetlink.org.uk

☎ 0300 500 0914

Royal British Legion

www.britishlegion.org.uk

☎ 0808 802 8080

RCHT West Cornwall Hospital and St. Michaels Hospital

www.royalcornwall.nhs.uk

West Cornwall Hospital

☎ 01736 874000

St Michael's Hospital

☎ 01736 758854

Volunteering in hospitals

☎ 01872 253 737

Royal Voluntary Service (RVS)

www.royalvoluntaryservice.org.uk

☎ 0330 555 0310

☎ 01209 218179

SADA (SAD Association)

www.sada.org.uk

✉ contact@sada.org.uk

Samaritans

www.samaritans.org

☎ 116 123

Solid Fuel Association

www.solidfuel.co.uk

☎ 01773 835 400

Stop Smoking Calculator

www.nhsinform.scot/stopping-smoking/calculate-my-savings

St Petrocs

www.stpetrocs.org.uk

☎ 01872 264 153

Transformation Cornwall

transformation-cornwall.org.uk

✉ info@transformation-cornwall.org.uk

Transformation CPR

☎ 01209 719415

✉ admin@transformationcpr.org

Truro City Council

www.truro.gov.uk

☎ 01872 274 766

Veterans' Gateway

www.gov.uk/government/collections/find-support-for-veterans-and-their-families

☎ 0808 802 1212

Victim Support

www.victimsupport.org.uk

☎ 0808 1689 111 - 24/7

☎ 0300 3030 554 - Mon-Fri
local support available 12-6pm

Volunteer Cornwall

www.volunteercornwall.org.uk

☎ 01872 265 305

Transport

☎ 01872 265 300

✉ enquiries@volunteercornwall.org.uk

Wales & West Utilities

☎ 0800 912 2999

www.wvutilities.co.uk

With You

www.wearewithyou.org.uk

☎ 0333 2000 325 (24hrs)

Winter Fuel Payments

www.gov.uk/winter-fuel-payment

☎ 0800 731 0160

YZUP

☎ 01872 300 816

A confidential and professional drug and alcohol service for young people aged 11 to 18 in Cornwall and the Isles of Scilly.



There are many different places that can help you across Cornwall and the Isles of Scilly including:



10 Minor Injury Units

Most are open every day, including evenings and weekends. Check times before you go.



Urgent Treatment Centre at West Cornwall Hospital

Open every day from 8 until late.



Pharmacies and Community Hubs

See information below.



Minor Injury Unit or Urgent Treatment centre



No appointment needed.

Your nearest may not be your quickest so check wait times and locations online before you go.

Pharmacies



There are more than 90 pharmacies in Cornwall.

Find your nearest and check opening times.

Community Gateway Service



Call 01872 266383 or email welcome@kernowgateway.org.uk

Open 7 days a week from 8am to 8pm.

The Community Gateway is a dedicated telephone line that can help you find professional voluntary sector support.

Your Community Hubs



Offering you a safe, warm and welcoming place to get help and support with your mental and physical health and wellbeing.

This includes tackling loneliness, providing warm spaces, food and activities you can get involved in with others.



“The HANDi App has been incredibly beneficial for me since becoming a mum.”

“Hi, my name is Gemma, I live in Plymouth and I am a full-time Mum of three children aged 4, 6 and 11 years old. When my children were slightly younger, I got myself into a routine of regularly ringing the doctors whenever any of them started to show any unusual health-related symptoms – from a high temperature to skin conditions and everything in-between. I always want to make sure I am treating symptoms correctly and not mistaking them

for something more serious. It was not until my friend recommended that I download the HANDi App, that I realised how easy it is to get the professional medical advice I need and as a result, educate myself at the same time to improve my medical know-how. To any parents who want to learn how to check and treat their children’s symptoms when they are unsure, I definitely recommend downloading the HANDi App to put your mind at ease.”



**Download the HANDi App
on your Apple or Android
smart-phone or tablet.**





Scan the
QR code to
find out more



**Free, confidential therapy for anyone over 16
experiencing anxiety and depression.**

To self-refer, call **01208 871 905 or visit
cornwallft.nhs.uk/talking-therapies**



for anxiety and depression



Funded by
UK Government



ChatHealth
Cornwall and the Isles of Scilly

ChatHealth Parent Line 0-5

TEXT 07312 263 423

ChatHealth Parent Line 5-19

TEXT 07312 263 499

ChatHealth Young People 11-19

TEXT 07312 263 096

**Alternatively, for 0-19 health advice
you can also contact:**

t 01872 324261 (option 2)

e hvsnadvice@cornwall.gov.uk

**Get
confidential
health and
wellbeing advice
and support**



Scan me



Together  for Families



**Council of the
ISLES OF SCILLY**

www.cornwall.gov.uk/chathealth

The 0-19 Health Advice line team operates Monday – Friday 9am -5pm and is staffed by qualified nurses, Health Visitors and School Nurses, answering health related questions or signposting to more appropriate support. Parents, carers or young people can contact via telephone, email or the new text service ChatHealth.

Notes/Reminders

A series of horizontal dotted lines for writing notes or reminders.

Notes/Reminders

Notes/Reminders

A series of horizontal dotted lines for writing notes or reminders.



WINTER Wellbeing

For help this Winter call **0800 954 1956** or email **advice@cep.org.uk**

This guide has been produced by Inclusion Cornwall on behalf of the Winter Wellbeing Partnership and funded by Wellbeing and Public Health. To ask for more copies of this Winter Wellbeing Guide or to provide feedback for next year's version please email **winterwellbeing@cornwall.gov.uk** or call **01872 324280**

